

EVERY CANCER
TELLS A STORY
IF YOU HAVE THE
TOOLS TO READ IT

Oulu University

14 October 2015

15-16 pm

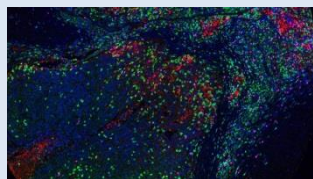
Room H108 (Aapistie 5A)

Come see and hear a presentation on PerkinElmer's portfolio of solutions for your cancer immunology research needs by Dr. Dorothee Preimel, Specialist Tissue Imaging

To advance your research, it's critical that you see everything the tumor has to show you.

With our Cancer Immunology & Immunotherapy Research Solutions, you can detect, measure, visualize, and compare multiple immune-cell phenotypes simultaneously in FFPE tissue – in the same tumor and its microenvironment.

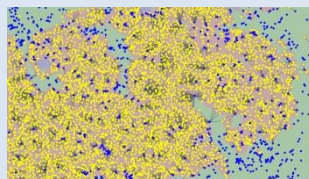
For validating biomarkers and providing better data to support research into potential subpopulation stratification methodologies, there's finally a complete *in situ* solution.



STAIN



IMAGE



ANALYZE
& QUANTIFY



RESEARCH
SERVICES

Research solutions for cancer immunology & immunotherapy
www.PerkinElmer.com/Cancer-Immunology

