

Wisdom Days 2026

Science for Sustainability Transformations

6 - 8 May, 2026

University of Jyväskylä, Finland

Explore sustainability transformations and planetary well-being through scientific discussions and presentations at this multidisciplinary conference. Hear inspiring keynote speakers and join interactive workshops. Share your ideas and present your research to build connections with others working toward meaningful change.

More information: jyu.fi/wisdomdays



#WisdomDays26 #uniofjyvaskyla

Wisdom Days 2026

Call for papers

The conference accepts proposals for talks, speed-talks, posters, and workshops from researchers, students, and experts across disciplines. Please submit your proposal between **1 September - 14 November 2025**, and you will be notified in January 2026 if your abstract has been accepted.

Achieving long-term coexistence and flourishing of humans and non-humans requires sustainability transformations.



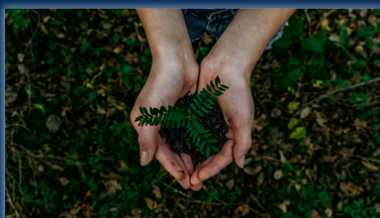
Sub-theme: Transformations
(Understanding and advancing sustainability transitions)



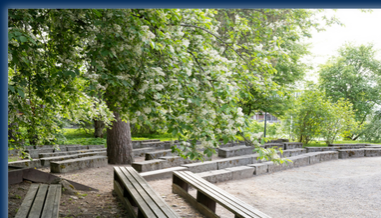
Sub-theme:
Production/consumption systems and the economy



Sub-theme: Diversity in world and worldviews (biodiversity and multispecies relations)



Sub-theme: Sustainable and Planetary Well-being



Sub-theme: Action, arts, and agency
(Co-creating sustainability)



Sub-theme: Nature Positive Universities

The abstract must be in English, submitted through an online form, and contain no more than 250 words. For workshop proposals, the word limit is 300 words.

[Check the detailed guidelines and submit here.](#)

Wisdom Days 2026

Keynote speakers



Rauna Kuokkanen

Research Professor of Arctic Indigenous Politics at the University of Lapland, Adjunct Professor of Political Science at the University of Toronto

Topic: Sustainability transitions and Indigenous futures



Christian A. Klöckner

Professor in Social Psychology, Norwegian University of Science and Technology

Topic: Success and failure stories of sustainability-related behavior change, and the role of democratic innovations in enabling rapid transitions



Jörn Fischer

Professor of Sustainable Landscapes at the Social-Ecological Systems Institute (SESI), Leuphana University Lüneburg

Topic: Regenerative dynamics for sustainability