

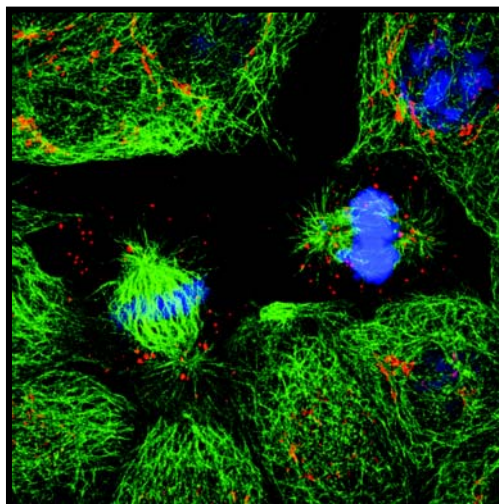
Wellcome Trust Four Year PhD Programme  
in the Faculty of Life Sciences, The University of Manchester

## The Dynamics of Cellular Pathways

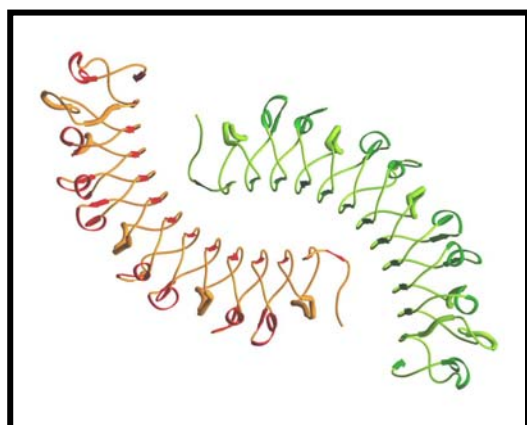
**We are seeking five outstanding research students for our Wellcome Trust-funded Four Year PhD Programme, for entry in September 2010.**

We focus on the function and dynamic regulation of pathways in health and disease, in:

- Gene expression and signalling
- Organelle biogenesis and membrane trafficking
- Extracellular matrix, cell adhesion and the cytoskeleton
- Cell division and apoptosis



We offer an excellent intellectual and scientific environment, a choice of 36 well-funded research laboratories, and a generous stipend (approximately £18k-£21k).



The first year of the Wellcome Trust PhD Programme involves three laboratory-based projects. The projects are supported by a taught module focusing on current research. Based on the experience you gain during your first year, you will choose the topic and supervisor for your PhD research which will last for a further 3 years. Projects available incorporate a whole range of skills ranging from computational approaches, traditional cell biology, molecular and genetic techniques through to biophysical and structural analysis.

For full details of supervisors and their areas of research, and instructions on how to apply see:

**[www.manchester.ac.uk/lifesciences/postgraduate/wellcometrust/](http://www.manchester.ac.uk/lifesciences/postgraduate/wellcometrust/)**

**Applications should be submitted by Dec 7<sup>th</sup> 2009.**  
**All short-listed candidates will be interviewed**